



Materials/resources required:

- Legos of different shapes and sizes. LEGO figures: Transport (buses, cars, bicycles, trains, planes, boats).
- Images of different types of transport (buses, cars, bicycles, trains, planes, boats).
- Paper sheets and coloured pencils. Small puppets or Lego figures.
- Factsheets on transport.

Note: in the absence of elements in LEGO pieces, invite children to draw, color and cut on paper, or build using other material.

Introduction:

Explain to children that a transport playground is a special place where children can learn about different means of transport and how they work while having fun. Talk about the importance of transport in our daily lives, what transports there are and how they help people move and transport goods. Involve children in research on the history and function of different means of transport. Show pictures of various types of transports so that children become familiar with them.

Procedure:

Preparation

Divide the children into small groups of 3 to 4 participants.

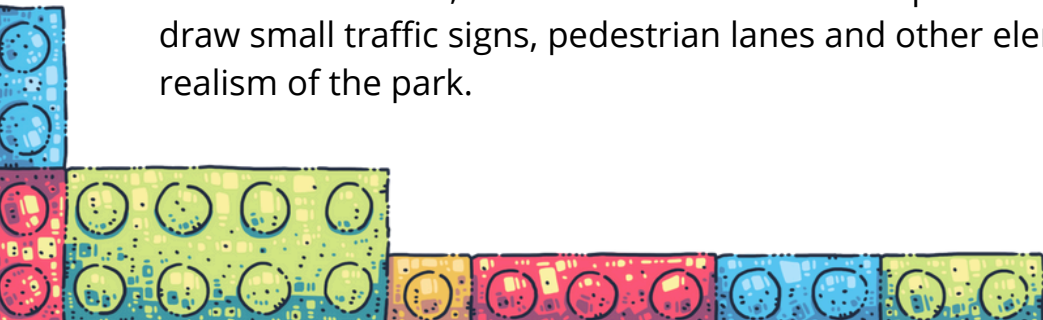
Each group should discuss and plan what their transport playground will look like. They can draw a sketch on paper to help them in the construction.

Construction

Using Legos, groups start building their playground, including different areas for each type of transportation (one area for cars, one for bicycles, one for airplanes, etc.). Encourage children to be creative and think outside the box when building their vehicles.

Details

After construction, children can decorate their park with additional pieces and draw small traffic signs, pedestrian lanes and other elements that increase the realism of the park.



Presentation

Each group introduces their transport playground to the rest of the class, explaining what they have built and what they have learned about the different types of transport.

Tips:

- Divide the activity into clear steps, starting with research and planning, followed by construction, and ending with the submission of projects. Suggest that children define which transports they will include in their construction and create specific spaces for each one. Emphasize the importance of incorporating elements such as roads, people and green spaces in its construction.
- Distribute art materials such as cardboard and markers, which can be used so that children can create additional elements to decorate their constructions, making them more appealing. Perform searches on specific elements related to each means of transport (control towers, stops, etc.).

Curriculum Connections:

This activity integrates:

Environmental Studies (types of transport, mobility and their societal importance)

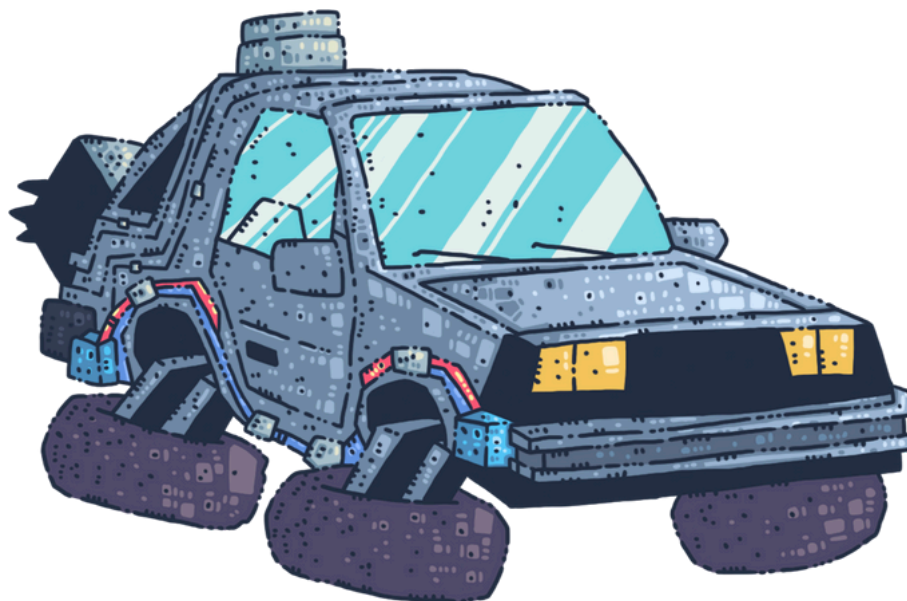
Mathematics (spatial sense, geometry, measurement and proportion)

Language (oral communication, idea sharing, project presentation)

Art (design, creativity, LEGO construction)

Physical Education (movement, locomotion, body awareness)

Social Skills (teamwork, communication, collaboration)





SDG Connections:

- **SDG 3:** Health and Well-being – Encourage understanding of the importance of mobility and physical activity.
- **SDG 4:** Quality Education – Promote inclusive and equitable learning by encouraging creativity and critical thinking.
- **SDG 11:** Sustainable Cities and Communities – Encouraging knowledge about sustainable transport systems and their importance to the community.
- **SDG 13:** Action Against Global Climate Change – Raise awareness of the importance of reducing carbon emissions and combating climate change.
- **SDG 17:** Partnerships and Means of Implementation – Encourage collaboration and teamwork by developing communication and cooperation skills among children.

