

A retirement home

Take Care of Seniors and Community

Key words:

Lego, nursing home, aging, care and well-being, community, sustainability

Target group:

primary school pupils
(ages 6-11)

Objectives:

This LEGO-based activity helps children understand the importance of caring for elderly community members while developing empathy and awareness of seniors' needs. Through collaborative construction of a retirement home, participants will practice teamwork while exploring architectural design and sustainable solutions. The project stimulates creativity and problem-solving as children consider both functional living spaces and eco-friendly features, blending social awareness with hands-on building skills in a meaningful learning experience.



General Guideline on Time Allocation:

The duration needed to carry out this activity may vary depending on the specific group of children. Teachers are encouraged to adapt the implementation according to the needs, interests, and dynamics of the group.

In the preparatory phase, teachers may use a variety of activities to introduce and contextualize the chosen topic. These can include discussions, videos, drawings, storytelling, or even a field trip, depending on the age and background knowledge of the children.

The main construction phase, during which children plan and build their urban element using LEGO bricks, should typically not exceed 45 to 60 minutes. However, this phase often stimulates further curiosity and questions among the children, potentially leading to extended engagement or follow-up activities. For more detailed instructions and pedagogical support on how to implement activities of INNO-kids project, please download the Teacher's Methodological Guide.



Materials/resources required:

- Several Lego pieces of different colors and shapes.
- Lego bases (optional).
- Lego furniture or other materials to build the furniture of the nursing home (beds, chairs, tables, etc.).
- Lego figures representing the elderly and nursing home staff.
- Lego plants and flowers or other materials to decorate the environment.
- Lego carts or other toys to represent vehicles visiting the nursing home.

Note: If there aren't LEGO pieces, invite children to draw, color and cut on paper, or build using other material

Introduction:

Talk to children about the elderly and the importance of caring for them. Explain what a nursing home is and how it works. You can show photos or videos of real nursing homes for the children to get a better idea of the environment.

A nursing home is a place where the elderly can live when they need additional care or when they can no longer live alone.

In this activity, we will create our own old people's home with LEGO! Let's think about how we can make this place comfortable and welcoming for the elderly, where they can feel happy and cared for.

Procedure:

Preparation

Introduce the theme of the nursing home and discuss with children about the importance of caring for the elderly in our community.

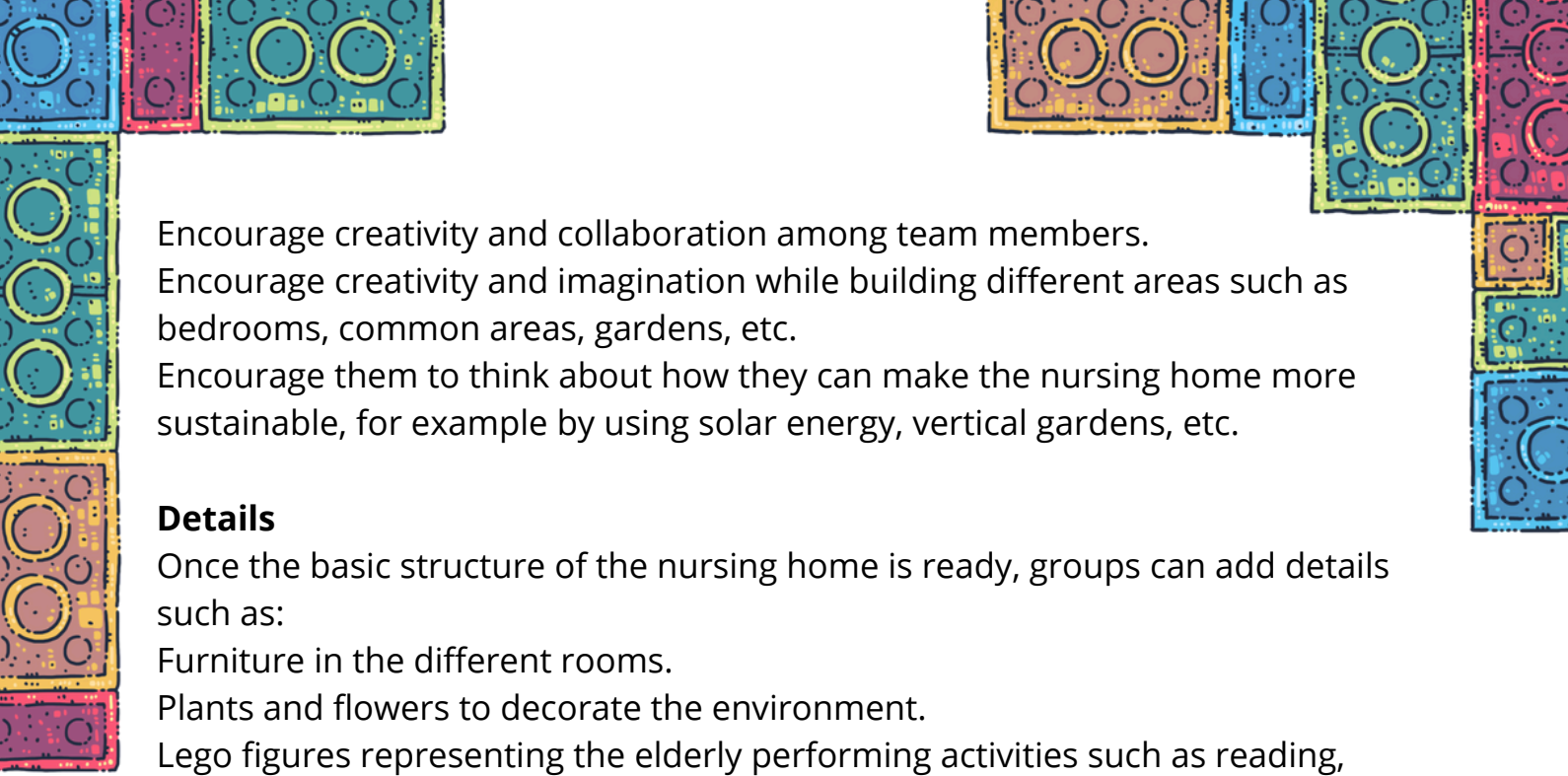
Show participants the LEGO sets available and explain that they will use these blocks to build the nursing home.

Divide the children into groups of 2 to 4 elements. Ask each group to discuss and draw a plan for their Lego nursing home. The plan should include the layout of the house, the different rooms (rooms, living room, kitchen, dining room, etc.), the decoration and the resources that the home will offer to the elderly (such as library, games room, green area, etc.).



Construction

Based on the plan, the groups should start building their Lego nursing home.



Encourage creativity and collaboration among team members.
Encourage creativity and imagination while building different areas such as bedrooms, common areas, gardens, etc.
Encourage them to think about how they can make the nursing home more sustainable, for example by using solar energy, vertical gardens, etc.

Details

Once the basic structure of the nursing home is ready, groups can add details such as:

Furniture in the different rooms.

Plants and flowers to decorate the environment.

Lego figures representing the elderly performing activities such as reading, games, physical exercises, etc.

Lego figures representing nursing home staff caring for the elderly.

Lego carts or other toys to represent vehicles visiting the nursing home.

Stories

When the nursing home is complete, children can create stories about the lives of the elderly who live there.

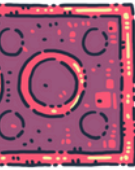
Presentation

After the construction is complete, ask the children to introduce their nursing homes to the group.

Each child can explain the different parts of the nursing home they have built and how these parts contribute to the well-being of the elderly.

Encourage story dramatization and interaction between groups.

Tips:

- 
- For younger children, it can be provided ready-made Lego bases to facilitate the construction of the nursing home.
 - If you have a large carpet, you can use it to delimit the area of construction of the nursing home.
 - Encourage children to use their imagination and creativity.
 - Encourage the sharing of children's own experiences on the topic.

Additional Considerations:

Differentiation:

Provide additional support or simplified instructions for pupils who may require extra assistance. For advanced pupils, offer extension tasks such as researching further sustainable practices or designing more complex models.

Assessment:

Assess pupils based on their participation and engagement during discussions and hands-on activities. Evaluate the creativity, effort, collaboration, depth of understanding demonstrated in their models, critical thinking, ability to provide constructive feedback and presentation skills.

Curriculum Connections:

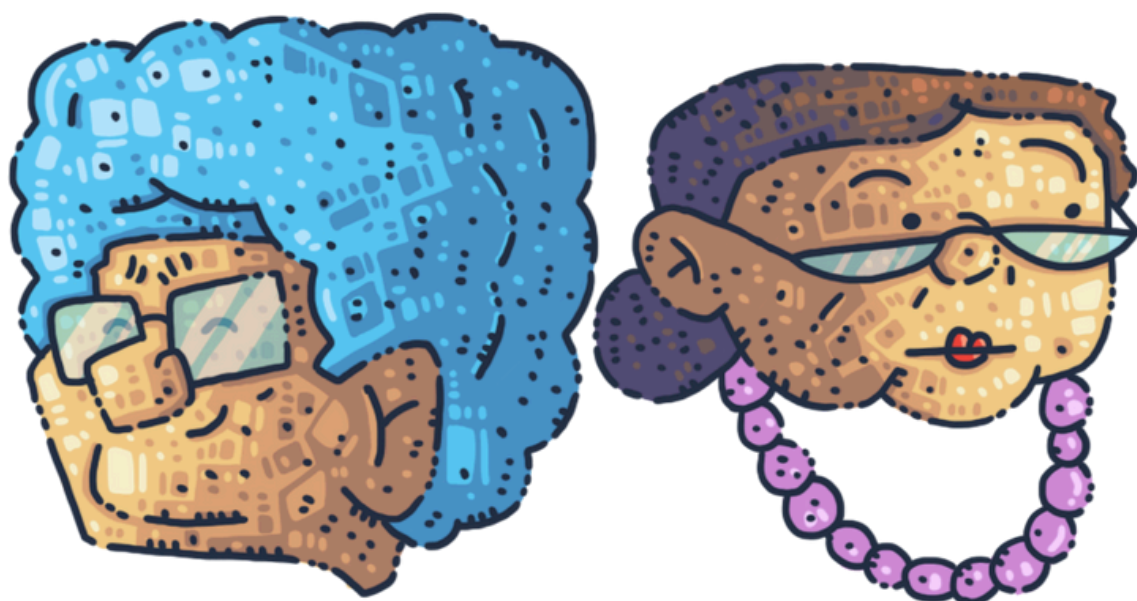
This activity integrates:

Environmental Studies (exploration of topics such as ageing, the importance of elderly care, and the role of care institutions within the community)

Art (development of creativity and expressiveness through LEGO construction and dramatization)

Citizenship Education (promotion of intergenerational respect, solidarity, and awareness of the value of caring for the elderly)

Language (enhancement of oral and written communication through project descriptions and the creation or dramatization of related stories)





SDG Connections:

- **SDG 1** - End Poverty: Ensure healthy and active old age for all.
- **SDG 3** - Quality Health: Provide access to quality health care for the elderly.
- **SDG 10** - Reducing Inequalities: Reducing inequalities between generations and ensuring the social inclusion of older people.
- **SDG 11** - Sustainable Cities and Communities: Create inclusive, safe and resilient cities and communities where people of all ages can live well.

Note: By thinking about how to make the nursing home more sustainable, children are contributing to the creation of more inclusive and environmentally conscious communities. It also promotes understanding and empathy for the elderly.

